

Standard Printed Circuit Board Ltd

www.standardpcb.com



Company Profile



www.standardpcb.com

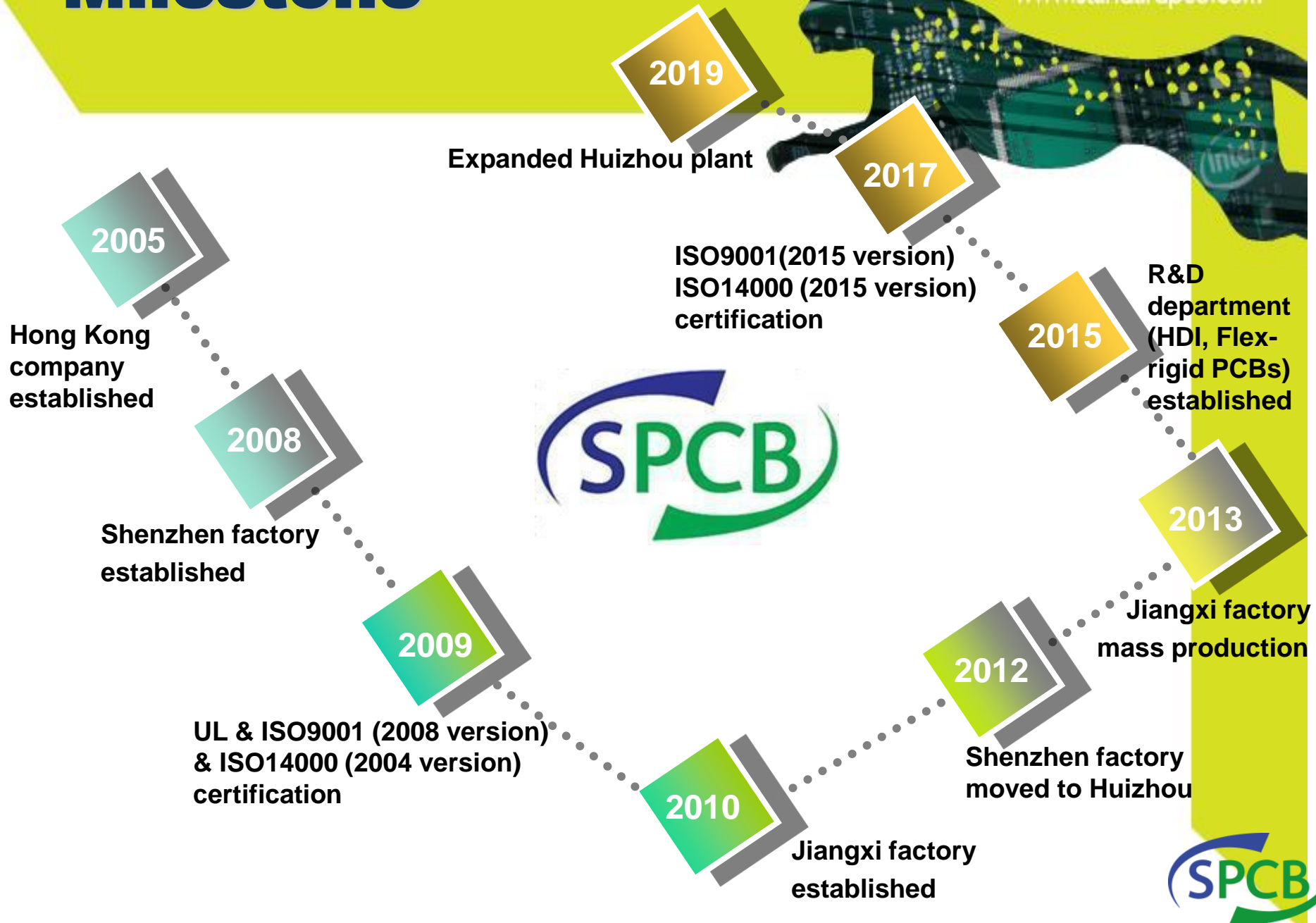


Experience what's better
Quick turn, Low cost
PCB manufacturing

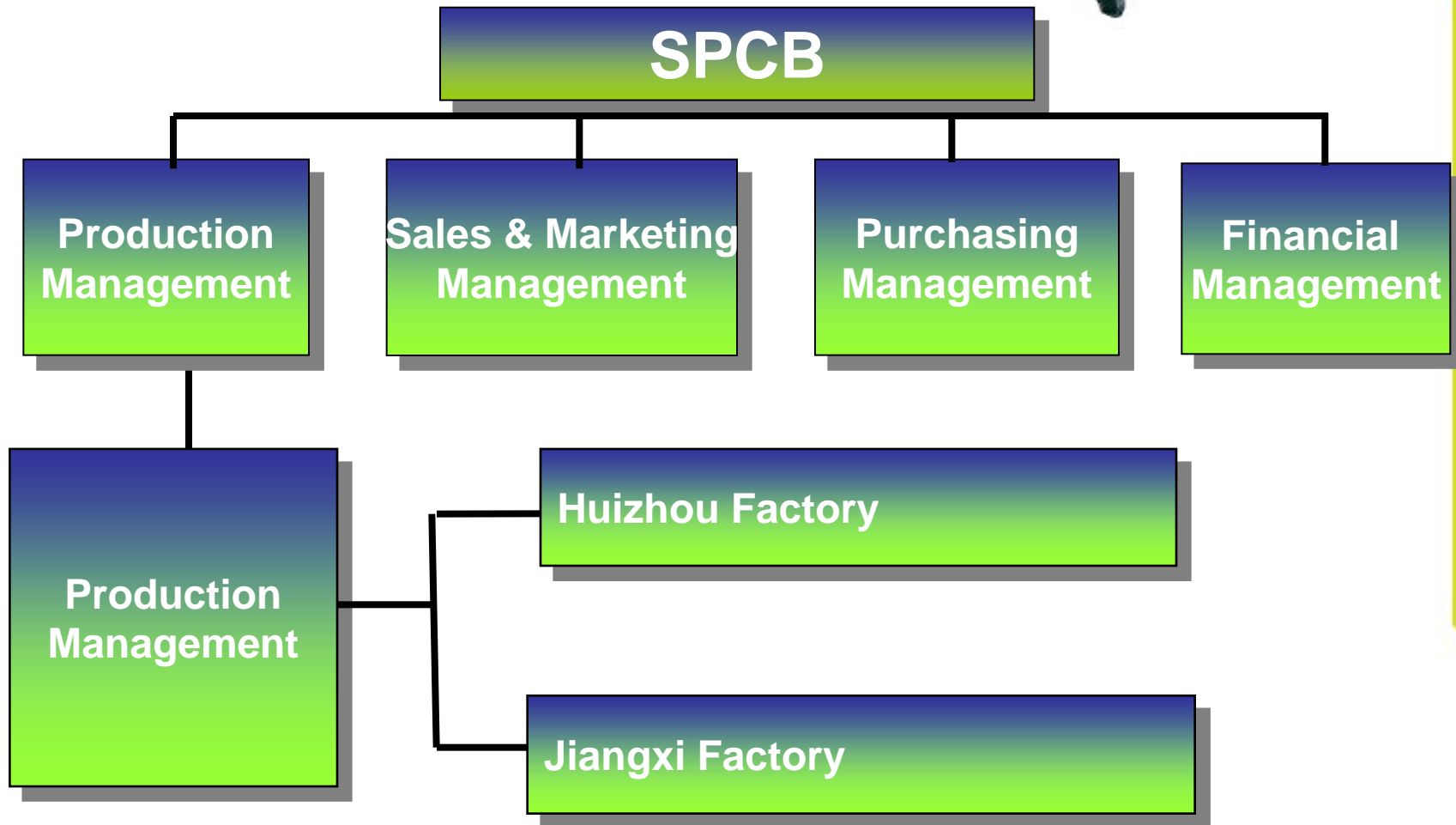


Milestone

www.standardpcb.com

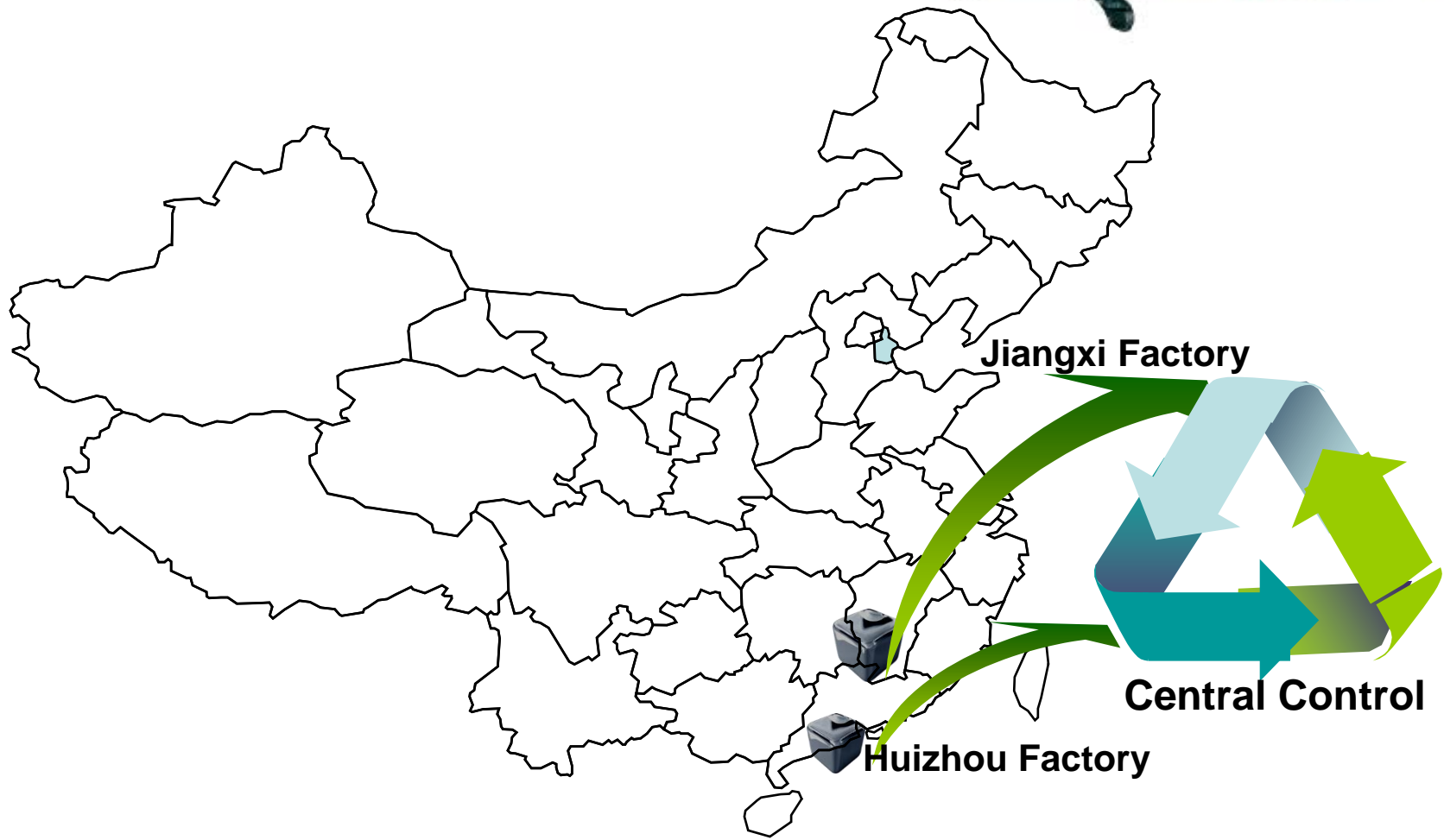


Company Structure



Factory Location

www.standardpcb.com



Factory Information

www.standardpcb.com



Huizhou Factory

- Capital: 60 million RMB
- Operation factory space: 5000 m²
- Employees: 128



- Quick-turn sample
36 hours for 2/L
72 hours for 4/L
- Sample&small volume
- Main raw materials
(FR4, CEM-3, Metal base)



Factory Information

Jiangxi Factory

- Capital: 96 million RMB
- Operation factory space: 8000m²
- Employees: 170



- Mass production (more than 10sq meters)
- Higher technology (1- 18/L)
- Main raw materials (FR-4, CEM-3, metal base, HDI mass production)



Office Location



Hong Kong Headquarter

- Address: Unit14, 12th Floor, Shing Yip Industrial Building, 19-21 Sing Yip Street, Kwan Tong, Kowloon, Hong Kong
- Tel: 852-29614637
- Fax: 852-2116 0216
- Email: info@standardpcb.com
- Web Site: www.standardpcb.com



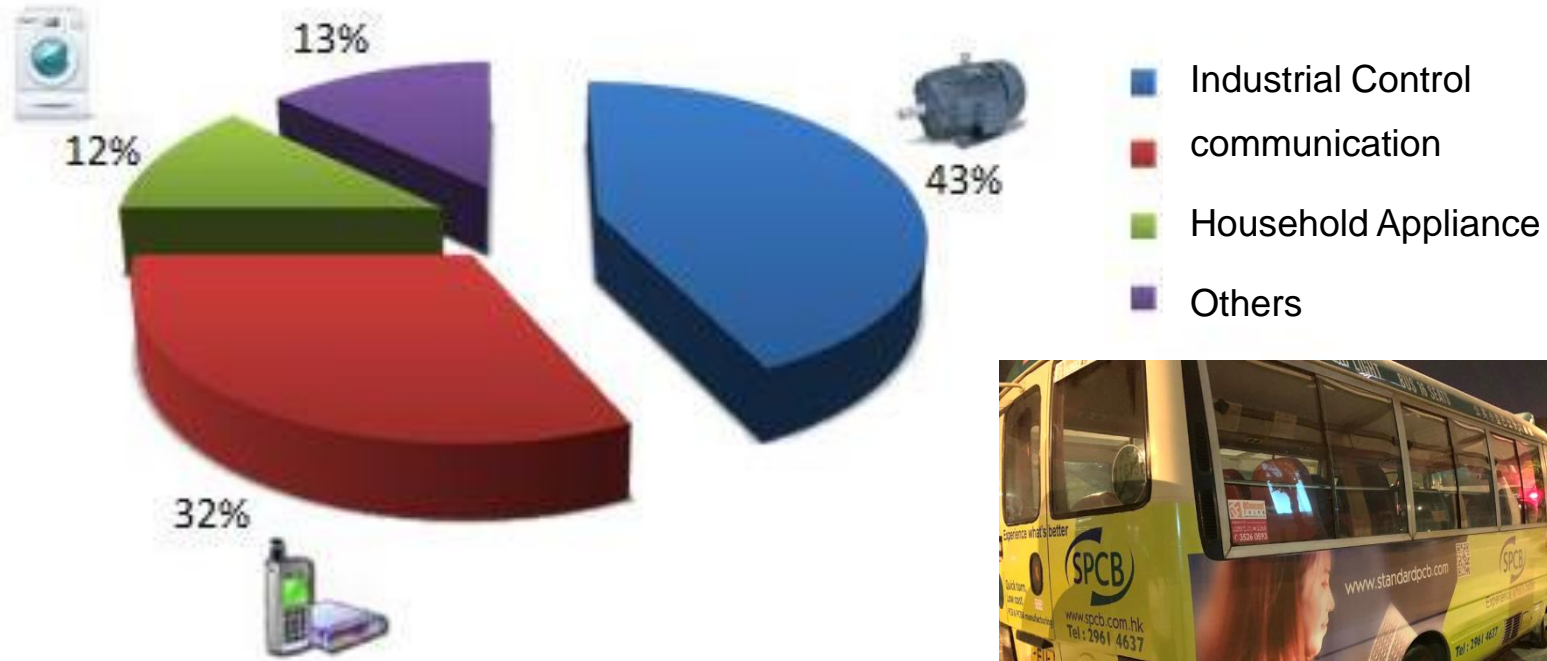
We provide world class
service & quality at
local market prices

Electronics Fair

www.standardpcb.com



Major Market Ratio



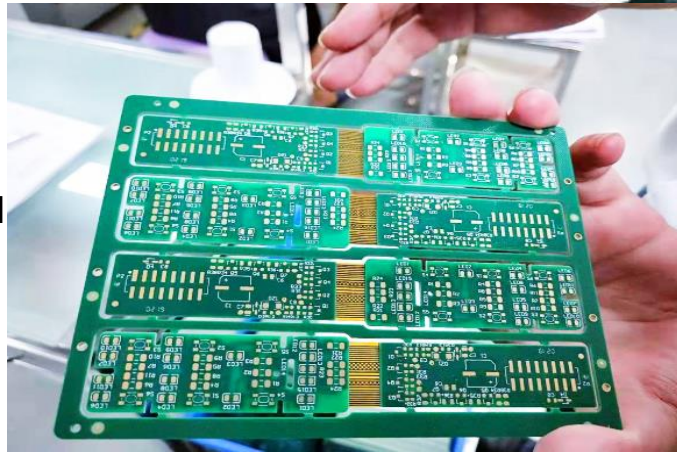
One-stop products and services

www.standardpcb.com



- **We Provide...**

- Advanced Technology Production
- Promising and Reasonable Prices
- Satisfaction and Quality Guaranteed
- Certified Quality Assurance
- Consultation and Professional Suggestion



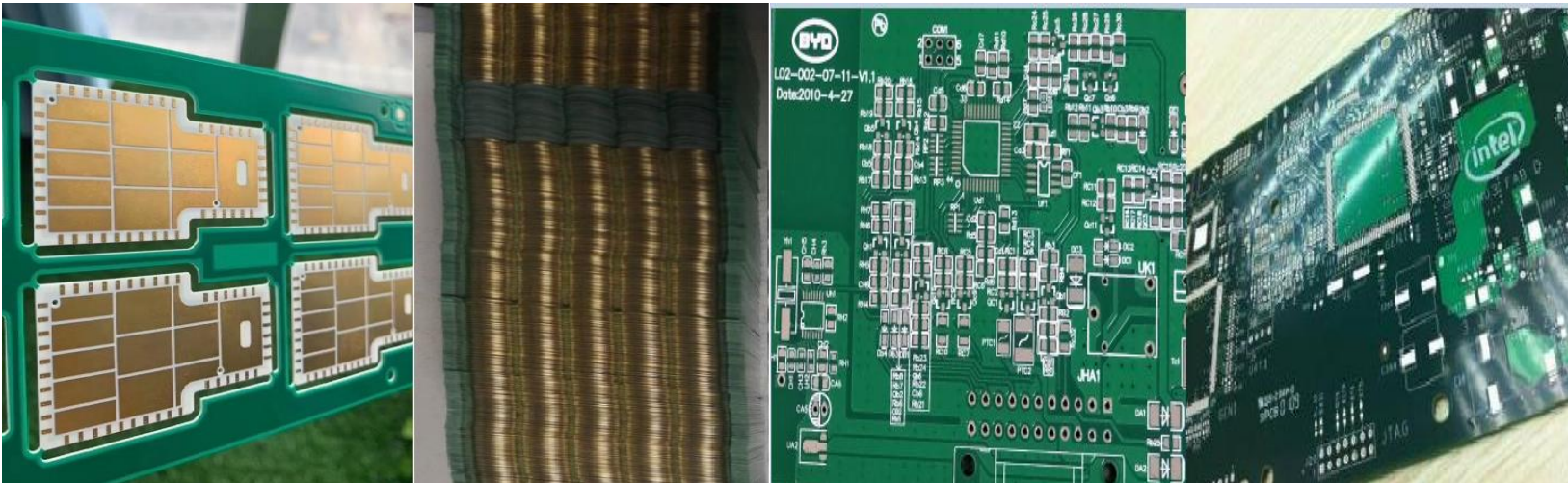
One-stop products and services

www.standardpcb.com

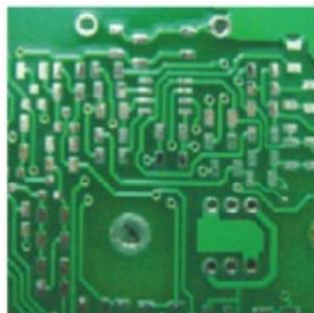


- **SPCB Produce ...**

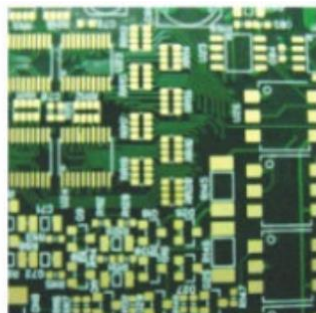
- 1/L-18/L advanced with different fields PCBs.
- Different raw materials: FR4, CEM-3, Rogers, Metal base and Flex-rigid PCBs.
- Different order quantity : Sample, Small volume and Large volume.
- Different surface finish: HAL, ENIG, Immersion Tin, Immersion silver, Peel-able Mask, Gold Fingers, OSP, Carbon Ink.



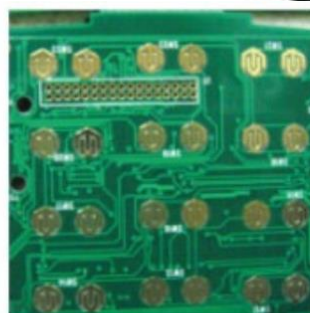
Major Products



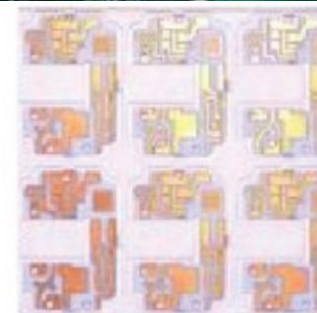
► H.A.S.L



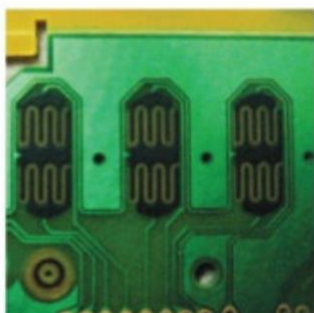
► Immersion Gold



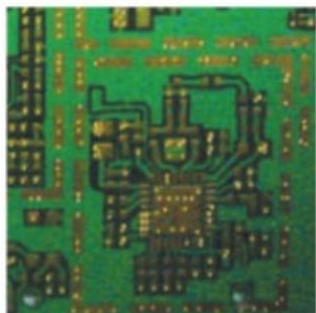
► Gold Plating



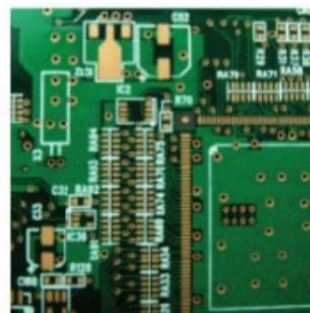
► Teflon PCB



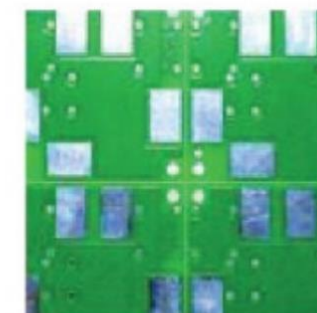
► Carbon INK



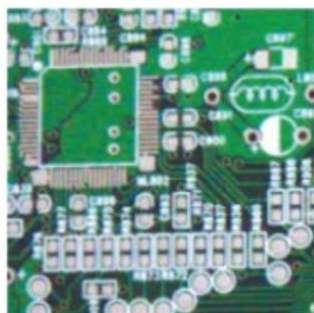
► Blind / Buried Via



► O.S.P



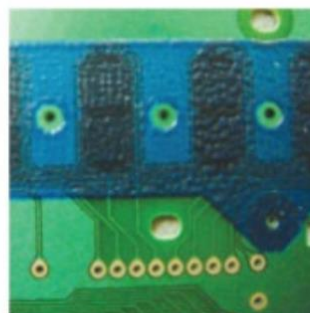
► Aluminium Based PCB



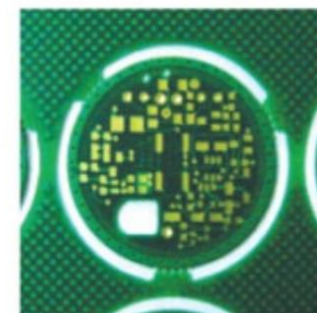
► Immersion Tin



► Gold Finger



► Peelable Mask



► High-Tg PCB

Factory

Major Equipment in production line

www.standardpcb.com



lamination



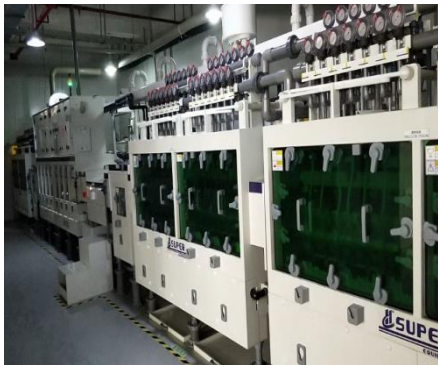
Drilling



PTH/Panel plating



Pattern Plating



Etching



Solder mask



CNC routing



Electrical Test

Major Equipment in Jiangxi

www.standardpcb.com



◆ Immerison Gold



◆ LF-HASL



◆ OSP

Surface Finish

Test Equipment in Jiangxi

www.standardpcb.com



▶ Vision measuring System



▶ Flying probe tester



▶ AOI



▶ Impedance tester



▶ Peel strength tester



▶ CMI900 gold tester



▶ RoHS analyzer



Capability & QC Systems



Capabilities



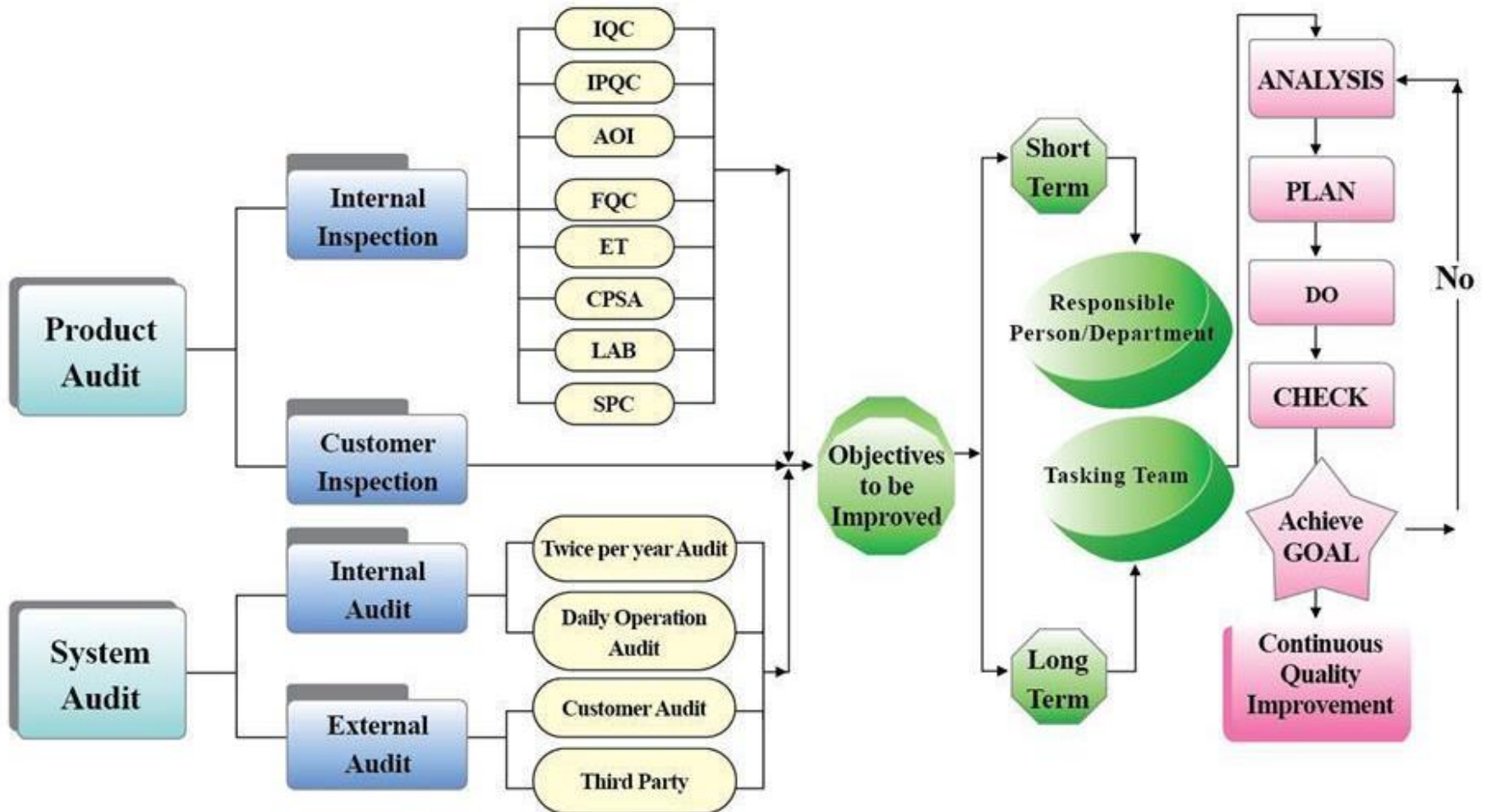
Huizhou Factory

Jiangxi Factory

Layers	1-6 Layers			1-18 Layers		
Material	FR4, CEM-3, Alu			FR4, Alu, High CTI, PI		
Max. Panel Size	508*610mm (20*24")			711*610mm (28*24")		
Min. Board Thickness	2/L	4/L	6/L	8/L	10/L	12&14/L
	0.2mm	0.4mm	1.0mm	1.2mm	1.5mm	1.6mm
Aspect Ratio	8 : 1			10 : 1		
Surface Finishing	HASL, ENIG, OSP, Immersion Silver			HASL , ENIG , OSP , Immersion Silver , Immersion Tin		
Min. Line Width/Space	0.1/0.1mm (4/4mil)			0.075/0.075mm (3/3mil)		
Min. Hole Size	0.2mm (8mil)			0.1mm (4mil)		
Impedance Control	+/-10%			+/-5%		
Warpage	≤0.75%			≤0.7%		

Quality Control Systems

www.standardpcb.com



Quality Control Systems

www.standardpcb.com



ONLINE CERTIFICATIONS DIRECTORY

ZPMV2.E326987
Wiring, Printed - Component

ZPMV8.E326987
Wiring, Printed Certified for Canada - Component

STANDARD PRINTED CIRCUIT BOARD LTD
UNIT 1214, 12/F, SHING YIP IND BLDG
19-21 SHING YIP ST
KWUN TONG
KOWLOON, HONG KONG

E326987



E326987

Type	Cond Width		Cond Thk mic(mil)	SS/ DS/ DSO	Max Area Diam mm(in)	Solder		Max Oper		Flame	Meets UL796	C	
	Min	Min				Limits	Temp	Class	DSR				T
	mm(in)	mm(in)											
Metal Base Single Layer Printed Wiring Boards.													
SPCB^A1	0.15 (0.006)	0.3 (0.012)	34 (1.34)		SS	50.8 (2.0)	280	10	90	V-0	-	-	
Metal Base Single layer printed wiring boards.													
^A1	0.10 (0.004)	0.10 (0.004)	34 (1.34)		DS	50.8 (2.0)	280	20	90	V-0	All	0	
Multilayer metal base printed wiring boards..													
^A2	0.16 (0.006)	0.48 (0.019)	30 (1.18) Int:102		SS	25.4 (1.0)	288	60	130	V-0	All	*	
Multilayer printed wiring boards.													
SPCB^M	0.10 (0.004)	0.10 (0.004)	17 (0.67) Int:70		DS	25.4 (1.0)	288	20	130	V-0	All	*	
SPCB^M1	0.15 (0.006)	0.18 (0.007)	34 (1.34) Int:68		DS	50.8 (2.0)	260	20	130	V-0	All	-	
^M	0.10 (0.004)	0.10 (0.004)	17 (0.67) Int:17		DS	50.8 (2.0)	280	20	130	V-0	All	3	
^M1	0.10 (0.004)	0.20 (0.008)	17 (0.67) Int:170		DS	25.4 (1.0)	280	5	130	V-0	All	*	
^M2	0.10 (0.004)	0.20 (0.008)	17 (0.67) Int:35		DS	25.4 (1.0)	280	5	130	V-0	All	*	
Single layer printed wiring boards.													
SPCB^D	0.10 (0.004)	0.10 (0.004)	17 (0.67)		DS	50.8 (2.0)	280	20	130	V-0	All	3	
SPCB^D1	0.16 (0.006)	0.23 (0.009)	34 (1.34)		DS	50.8 (2.0)	260	20	130	V-0	All	-	
^D2	0.14 (0.006)	0.14 (0.006)	35 (1.38)		DS	50.8 (2.0)	260	10	130	V-0	All	*	



Quality Control Systems

www.standardpcb.com

ISO 9001:2015
ISO 14001:2015



Global development



Moving to Huizhou and Jiangxi factories

www.standardpcb.com



Moving from Shenzhen to Huizhou and Jiangxi factories

Advanced & Auto
Production line

Labor source

Environment Control

Huizhou
Factory

Jiangxi
Factory

Shenzhen
Factory

Major Customer List



ITT

Engineered for life

AMETEK



Company Activity





Thank you!

We don't simply take orders,
we provide solutions.

www.standardpcb.com